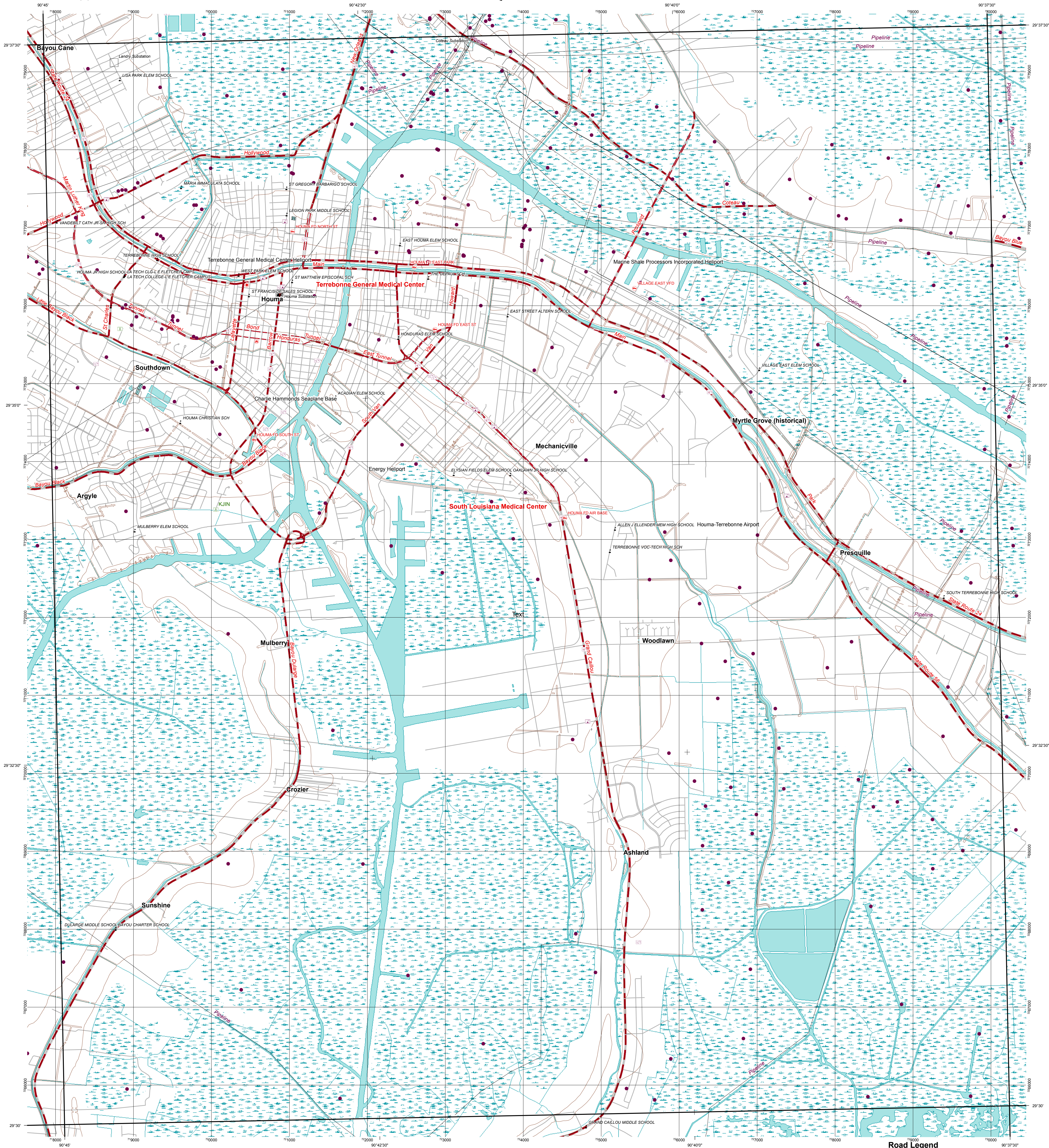




U.S. DEPARTMENT OF THE INTERIOR
U.S. GEOLOGICAL SURVEY



HOUMA, LA
Topographic Map Prototype



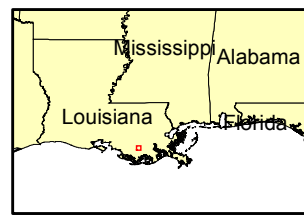
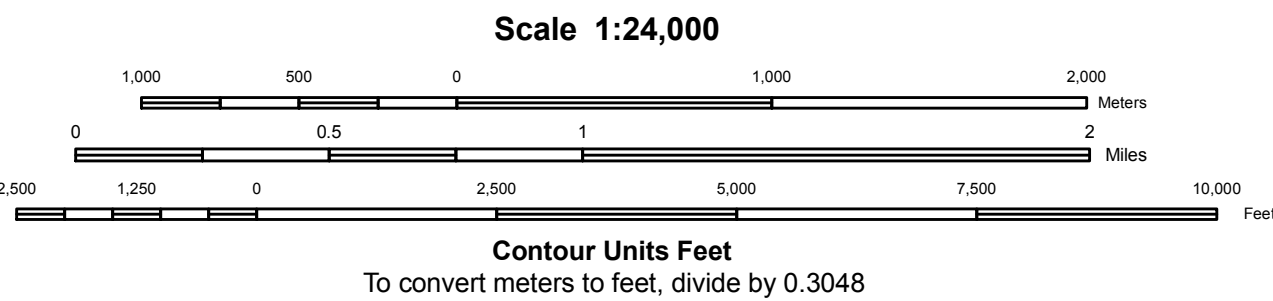
<BOL>Produced by USGS Product Generation Application</BOL>

Display projection: Universal Transverse Mercator, Zone 15 North
1000 Meter UTM Grid, Zone 15 North, NAD83

No cartographic or geographic edits were performed on this data

Selected data provided in the HSIP GOLD product is acquired from publicly available commodity vendors and is unclassified. Commercial data is restricted to Federal Users only. Exception to Releaseability Restrictions stated above: In times of a Declared National Emergency the data in the HSIP data CAN be provided to the State & Local authorities at no additional cost for the duration of the crisis.

Hydrography - USGS 24000 scale Digital Line Graph
Hypsography - USGS 24000 scale Digital Line Graph
Transportation - Department of Census
Misc. Transportation - USGS 24000 scale Digital Line Graph
Manmade Structures - USGS 24000 scale Digital Line Graph
Labels - Geographic Names Information System



| | | |
|--------------|--------|----------|
| Gray | Savoie | Lockport |
| Humphreys | Houma | Bourg |
| Lake Theriot | Dulac | Montegut |

USGS Quadrangle Index

| | |
|---------------------------|--------------------------|
| Primary Route | Local Street |
| Primary Route Separated | Driveway or Service Road |
| Secondary Route | Ferry crossing |
| Secondary Route Separated | |

Houma, LA

September 12, 2005
6:37 PM CST

Prototype Product - Not For Sale